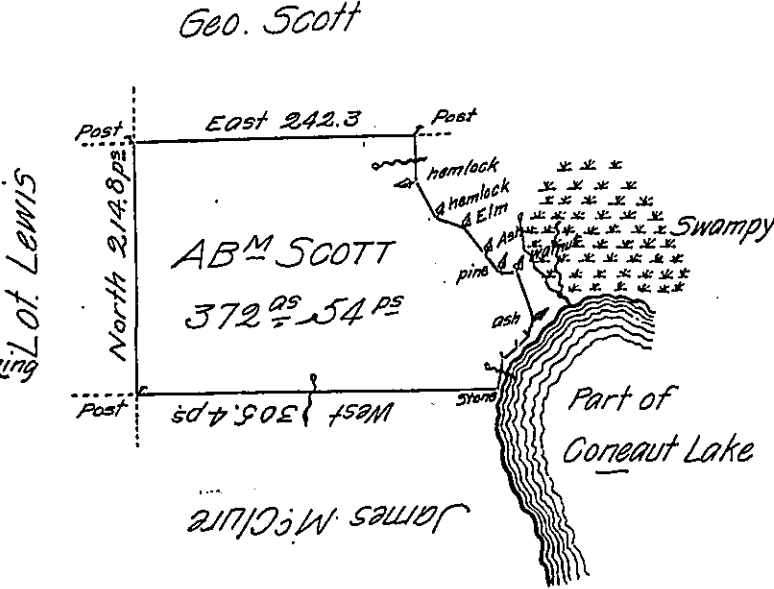


Courses and distances, of Abm Scott  
Whole Survey Beginning at a stone on the West  
bank of Coneaut Lake thence as follows:-

- West 305.4 ps. to a Post
- North 214.8 ps. to a post
- East 242.3 ps. to a post
- South 34.1 ps. to a hemlock
- S 23 E 36 ps. to a hemlock
- S 68 E 28 ps. to a Elm
- S 47 E 30 ps. to a Ash
- S 35 E 20 ps. to a pine
- East 9 ps. to a Walnut
- S 15 E 52 ps. to a Ash
- S 22 W 7 ps. to a post
- S 33 W 14 ps. to a post
- S 48 W 20 ps. to a post
- S 23 W 20 ps. to Stone the Beginning



In Pursuance of a Warrant for 400<sup>as</sup> of Land Granted to Abm. Scott, dated 21th  
day of April A.D. 1794 was surveyed the 10th day of October A.D. 1828, the  
Above described, tract of land containing three hundred seventy two acres and  
fifty four perches, and allowance of Six p<sup>r</sup> Cent for Roads &c. Situate in Sads-  
bury Township Crawford County Pennsylvania.

James Herrington D.P.S.

To Gabl Hiester Esq. S.G. of the  
Land Office of Pennsylvania

IN TESTIMONY that the above is a copy of the original remaining on file in  
the Department of Internal Affairs of Pennsylvania, made  
comformably to an Act of Assembly approved the 16th day of  
February 1833, I have hereunto set my hand and caused  
the Seal of said Department to be affixed at Harrisburg,  
this fourth day of March 1907.

*Isaac R. Brown*  
Secretary of Internal Affairs.